

VACUUM LIFTERS

ALPHA, MY AND TAU



JLM vacuum lifters - Taking your production to new heights

JLM teknik has worked purposefully with vacuum lifters for more than 25 years. With the Alpha, My and Tau models, we wanted to create vacuum lifters of the highest quality in a modern and contemporary design.

We have developed the vacuum lifters based on known functionality, but using the latest technologies with a focus on creating a vacuum lifter that you want to use, while being safe, easy and intuitive for your employees to work with on a daily basis.



JLM teknik and the healthy working environment

Assistive technology has a major impact on companies' working environment. At JLM teknik, we have intense focus on ergonomics and want to be an asset for a healthier working environment and prevent overuse injuries. We know that one of the key words is to purchase lifting equipment that users will benefit from in their daily workflows. The fact that our lifting equipment also contributes to higher efficiency in most applications is another matter entirely.

Contents

WHAT IS A VACUUM LIFTER?	4	Spare parts for My.	30
TYPICAL APPLICATIONS	6	TAU I & II	32
ALPHA	10	Tau table	34
Alpha table	12	Complete Tau lifting system	36
Complete Alpha lifting system	14	Accessories for Tau	37
Accessories for Alpha	16	Tau suction feet	38
Alpha suction feet	18	Spare parts for Tau.	40
Spare parts for Alpha	20	CONFIGURATION GUIDELINES	42
MY	22	NOISE	43
My table	24	OTHER ACCESSORIES	44
Complete My lifting system	26	MOVABLE VACUUM CRANE	46
Accessories for My	27	EMPTY	47
My suction feet	28		



JLM teknik is a well-consolidated, privately owned company that has worked intensively with lifting and handling solutions for more than 25 years.

Today, we are a full-service supplier of lifting equipment, much of which we manufacture ourselves. In Denmark, we sell directly to the end user. This means we know what our customers want. With development and production in the same building, we can quickly customise our products to our customers' wishes and needs.

- Own production:
- Aluminium overhead travelling system up to 1500 kg
 - Jib cranes up to 1000 kg
 - Standard range of lifting yokes: Sheet lifting yokes, glass lifting yokes, foil roller lifting yokes
 - Vacuum lifters/hose lifters
 - Customised lifting yokes

What is a vacuum lifter?

The vacuum lifter was developed back in the 1980s when some enthusiasts first started using vacuum in a lifting hose to raise and lower a load.

The vacuum lifter basically consists of a vacuum pump, a lifting hose, a manoeuvring handle and a suction foot. The vacuum pump is the only energy source and is available in many different variants with different vacuum depths, mbar and flow m³/h.

The vacuum pump creates negative pressure. By regulating the negative pressure, you can decide whether the vacuum hose should contract or expand. So, by regulating the vacuum, you can make the vacuum hose rise or fall. The negative pressure is regulated in the control handle,

where the operator can steplessly let "false" air into the system, thus determining whether the hose should rise or fall. The negative pressure in the vacuum hose is the same negative pressure used by the suction cup to hold the item.

Many will wonder if the suction cup doesn't let go when "false" air is let into the system? And the answer is no. The vacuum lifter is designed in such a way that it continues to hold the load even when "false" air is let in. However, it is important to emphasise that the ratio between the area of the lifting hose and suction cup must have the correct and indicated ratio.

Solutions for a healthy and safe working environment!

When looking at lifting solutions, there are many factors to consider. It is first and foremost ergonomics, but also the lifting and handling process itself that is very important to analyse. We are always very thorough in this analysis and know from experience that it is very important that the equipment delivered is something the operator wants to use again and again.

With a JLM vacuum lifter mounted in one of JLM's smooth-running aluminium overhead travelling cranes, you get the best and most proven solution on the market. Using a JLM vacuum lifter is quite simple. It doesn't require much training and within a few hours the operator will be familiar

with the use of the vacuum lifter. Simply because it's the operator who decides. The operator will experience how safe it is to lift, how fast the vacuum lifter works with soft, stepless and very smooth handling. Everything is controlled by the operator's movements. It doesn't take long before the operator gets the feeling of total freedom with a "weightless" load, without in any way losing the manual speed of handling.

JLM has an extensive range of accessories and equipment that allows you to modify or expand existing solutions to continuously adapt to your future needs and requirements.

The JLM vacuum lifter can be used for many types of products

With the right combination, the JLM vacuum lifter can be used for efficient, safe and gentle handling of a wide variety of items. These materials can be cardboard, wood, glass, metal, paper, plastic, stone and polystyrene. A vacuum lifter can also be used for many different types of surfaces: smooth, round, oval, uneven, leaking, door panels.



Safety

As mentioned, JLM's vacuum lifter is powered by a vacuum pump. Thanks to a non-return valve at the top of the lifting hose, negative pressure can be maintained even if the vacuum pump stops. This means that under controlled conditions, the lifting hose will "stretch" and the suction foot will NOT release the load until contact is made with the floor or another solid surface. When the lifting hose "stretches" out during the lowering movement, a vacuum is also created, which further slows down the lowering movement itself.

If the load is too heavy or the air flow in the item is too high, there will not be enough negative pressure to lift the load. JLM vacuum lifters never lift heavier loads than they can handle, with the right dimensioning of the solution.

How much can you lift?

The starting point for assessing lifting is the weight of the load and its distance from your back during the lift (reach distance). The reach distance (R) multiplied by the weight of the load gives an expression of the external load on the back.

Red area: Lifting in the red area is considered clearly harmful to health. Immediate action must be taken to mitigate the risk.

Yellow area: Lifting in the yellow area means that a more detailed assessment of the other factors (see below) must be carried out to determine whether they aggravate the load so that the lift is considered harmful to health.

In the upper part of the yellow area, the lift is only acceptable if performed under optimal conditions. This means that the entire lift takes place in front of the body, between mid-thigh and elbow height, the load is designed for handling, there is at least two minutes between lifts, no carrying is performed, footing is stable and the climate is suitable.

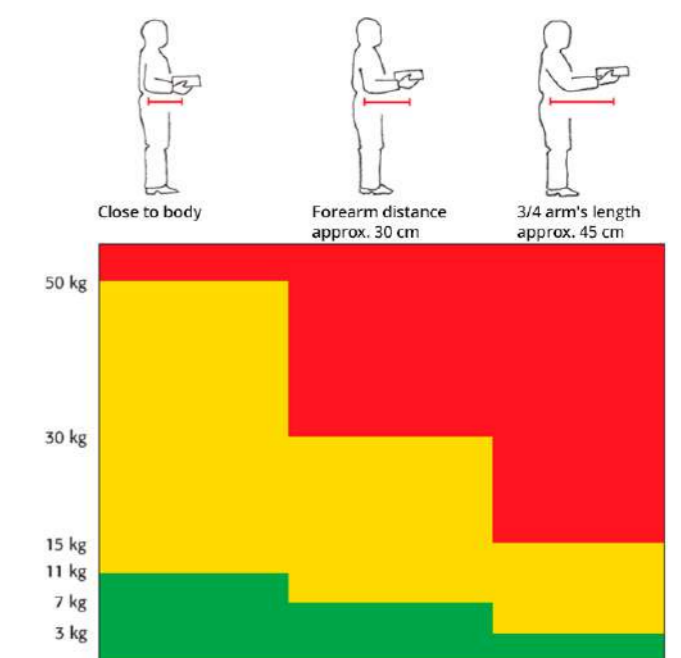
In the centre part of the yellow area, the number and severity of aggravating factors determine whether the lift can be harmful to health.

If the load of the lift is close to the green zone, several aggravating factors usually need to be present before the lift is considered harmful to health. In some cases, a single factor, such as working posture, can be so stressful that lifting at the bottom of the yellow area can be harmful to health.

Green area: Lifting in the green area is usually not harmful to health due to weight and reach distance.

An overall assessment of the work must always be carried out before any action is taken. A holistic assessment must take all factors into account.

For work that involves a lot of lifting per working day, the total weight must be taken into account when assessing whether the work can be harmful to health.



Typical applications

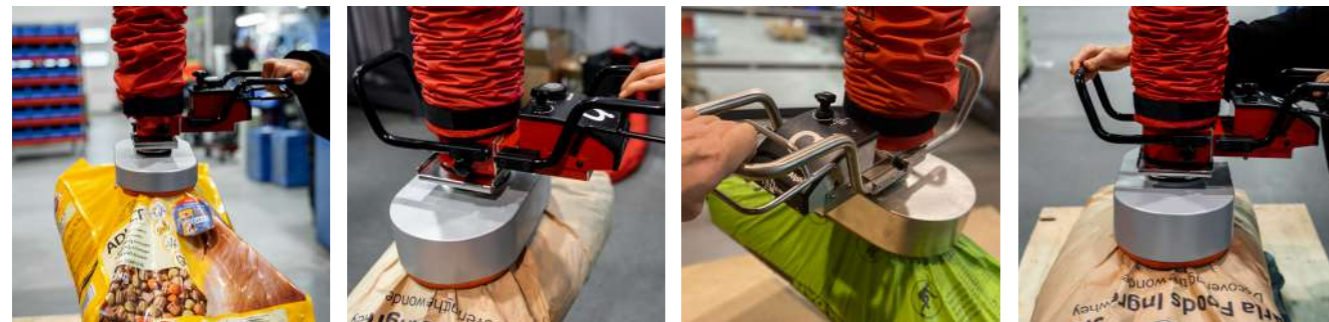
Lifting sacks

Manual bag handling can be one of the most unpredictable things. It can be heavy, it can be difficult to grasp due to its shape, the material inside the sack might shift.

By choosing a vacuum lifter with the right dimensions, lifting sacks can be a breeze. However, there are some precautions to consider when choosing a vacuum lifter for sacks.

- Is the sack made of a material that can withstand being lifted without breaking.
- Is the sack made of dense material such as plastic or porous material such as paper. The more porous the material, the more flow is required in the vacuum lifter.
- If the sack is loose, i.e. the material in the sack can shift, a grid must be built into the suction head to prevent the sack from being sucked up into the vacuum lifter.

Other conditions may also apply, which is why JLM always offers to do a test lift with your specific sack. This ensures that we find a solution that is also used.



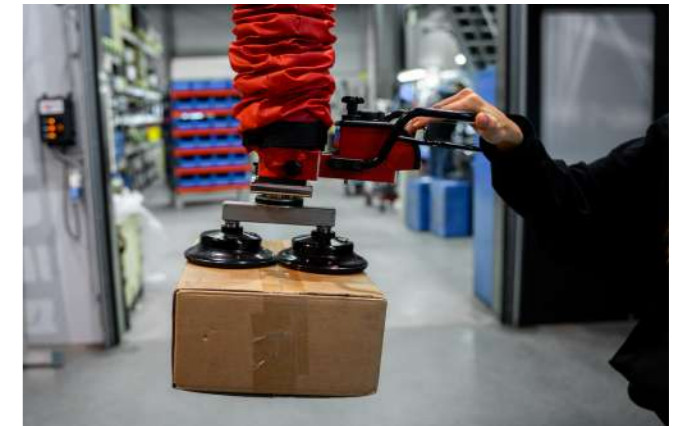
Lifting cardboard boxes

Cardboard boxes today are almost a science in themselves. They come in many different shapes and forms. They can be made of cardboard with relatively low porous and leakage properties, what we call good cardboard boxes. But it can also be very bad cardboard with high porous and leakage properties. There are also extremely strong cardboard boxes that are surprisingly strong enough to hold items weighing over 100 kg.

There are also other factors that come into play when lifting cardboard boxes:

- Is the box open or is there tape around it, maybe also strapex strap.
- Do you need to lift on the top of the box, or maybe on the side.
- Do the boxes need to be stacked in height or vice versa.
- Does the cardboard box need to be rotated or perhaps tilted.

One thing is certain, for JLM, a cardboard box is not just a cardboard box. Our years of experience tell us that we are often surprised by cardboard boxes.



Lifting sheets and boards

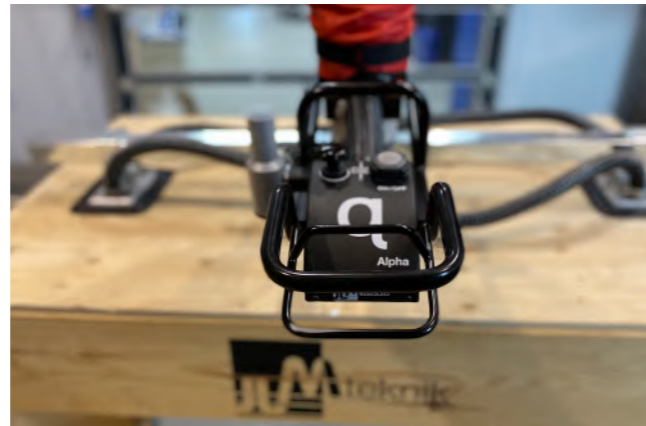
Manual lifting of sheets and boards, depending on size, often requires two people. However, with a vacuum lifter, lifting even the largest sheets and boards is easy and not a hassle for one person. This significantly increases efficiency. The vacuum lifter is perfect for wooden boards, plasterboard, glass, metal sheets, plastic sheets and polystyrene sheets.

Many people use a traditional sheet lifting yoke to lift wooden boards, but have you thought about what happens if the energy supply is interrupted? Wooden boards typically have high porous and leakage properties. This means that the moment the energy supply is interrupted, the load is released almost instantly.

It's different with a vacuum lifter that is dimensioned correctly. The moment the energy supply is interrupted, the vacuum hose will slowly extend to its full length so that the item reaches the ground before the suction cup releases its grip on the board.

There may also be other aspects of the process that need to be considered when lifting sheets and boards:

- Should the sheets and boards be stacked in height or vice versa?
- Should the board or sheet be taken horizontally or vertically?
- Maybe it needs to be rotated or tilted 90°, maybe 180°?
- Is the board or sheet so thin that it bends?
- Maybe there is film around the board or sheet?



JLM teknik is happy to take on the challenge of lifting your sheets and boards. We have the necessary experience and knowledge.

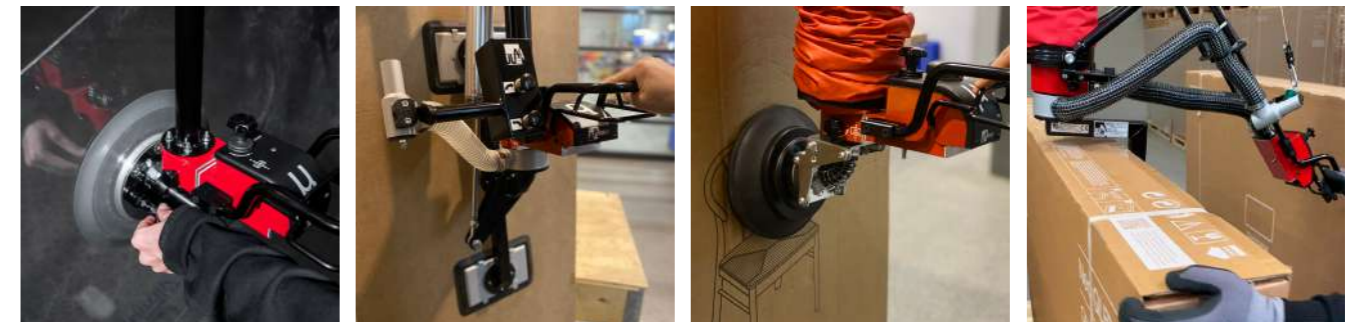


A world of lifting

JLM teknik is probably the company in the world with the most experience in lifting diverse items with vacuum lifters. We have solved hundreds of different tasks to the great benefit of our customers.

JLM teknik considers itself a market leader in the field and is not afraid to share our more than 25 years of experience.

If you are unsure whether we can solve your task, you are very welcome to contact us. We'd also be happy to do a test lift of your particular item in our showroom. If you would like to participate yourself, you are more than welcome.



Alpha

Alpha is the classic and powerful vacuum lifter Alpha can be configured to lift items from 20 kg up to 230 kg. In special cases, it is possible to combine several lifting hoses to significantly increase capacity.

Alpha has a built-in adjustment knob for unloaded and loaded height positioning. This means that the vacuum lifter's control handle is always in the desired position when the operator is not holding the control handle. One of the benefits of this is that the operator doesn't have to bend down for the control handle.

As standard, Alpha always has wireless control of the vacuum pump built in. The On/Off button is cleverly placed on the control handle. Wireless start/stop makes it quick and easy for the operator to start and stop the pump, which helps to significantly reduce energy consumption. Just as it gives the operator confidence to stand with the control handle when starting or stopping the vacuum pump. Alpha has a very extensive range of accessories and JLM is constantly looking to develop and optimise our vacuum lifters.



Alpha is also available in stainless steel and we have the option to deliver to ATEX zone II.



The Alpha handle is designed to be operated with one or both hands, depending on the operator's preference

- Robust vacuum lifter for the big and heavy jobs
- Large accessory / equipment range
- Intuitive controls that follow the operator's movements
- Height positioning with and without load



LIFTING UNIT		120	140	160	180	200	230
Lifting hose ø	[mm]	120	140	160	180	200	230
Max. capacity	[kg]	65	90	115	145	180	230
Hose length L	[mm]	2750/3000/4000					

PUMP		D25	F20	F30	F40
Power	[kW]	3.0	3.0	4.6	7.2
Max. flow	[m³/h]	180	120	160	240
Vacuum depth	[%]	50	70	70	74
Noise level (without a sound box)	[dB(A)]	70	78	78	80
Noise level (in a sound box)	[dB(A)]	66	60	61	62



D25 pump
Item no. 131070



F20 pump with frequency
Item no. 131200



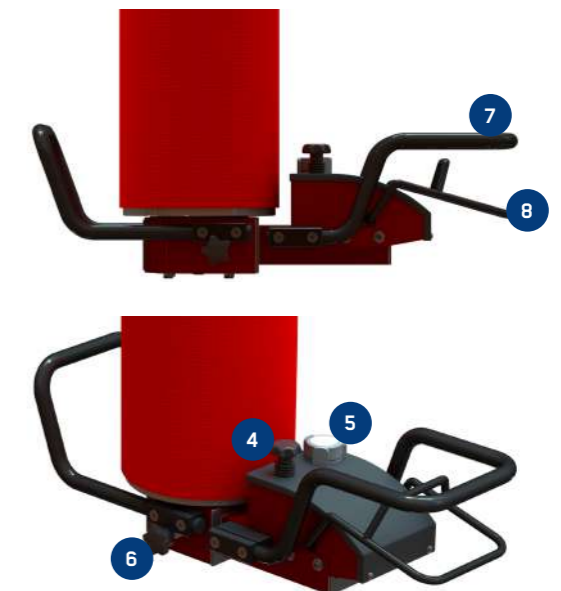
F30 pump with frequency
Item no. 131300



F40 pump with frequency
Item no. 131400



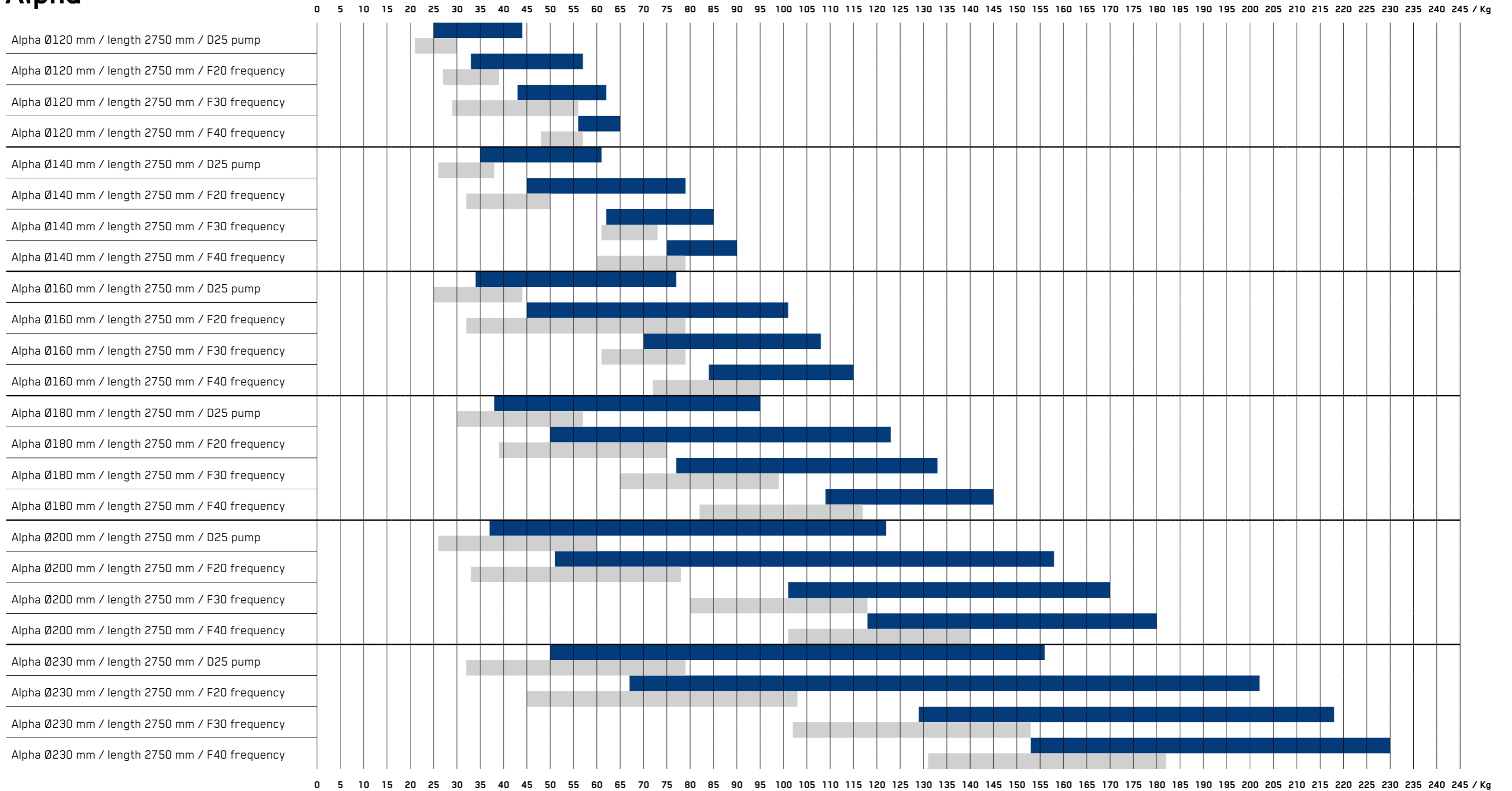
Frequency



FUNCTIONALITIES

1. Suspension eye with a swivel
2. Lifting hose
3. Protective sock
4. Height positioning with load
5. Wireless start/stop of the vacuum pump
6. Height positioning without load
7. Control handle
8. Control lever for raising/lowering function

Alpha



This chart shows the recommended "weight range" in kg to lift the item in relation to the current lifting hose and vacuum pump combination.

The chart is indicative only and should be taken with caution as many factors influence the lift. Try to choose a lifting hose with as large a diameter as possible. This gives a "softer" and lighter movement in the lift.

A complete Alpha lifting system consists of



Lifting hose with handle



Sock



Pump



Filter housing



Wireless start/stop

ITEM NO.	COMPLETE ALPHA LIFTING SYSTEM		
111122520			F20 frequency with wireless start
111122525	Ø120 mm	2.75 m.	D25 pump with wireless start
111122530			F30 frequency with wireless start
111122540			F40 frequency with wireless start
111142520			F20 frequency with wireless start
111142525	Ø140 mm.	2.75 m.	D25 pump with wireless start
111142530			F30 frequency with wireless start
111142540			F40 frequency with wireless start
111162520			F20 frequency with wireless start
111162525	Ø160 mm.	2.75 m.	D25 pump with wireless start
111162530			F30 frequency with wireless start
111162540			F40 frequency with wireless start
111182520			F20 frequency with wireless start
111182525	Ø180 mm.	2.75 m.	D25 pump with wireless start
111182530			F30 frequency with wireless start
111182540			F40 frequency with wireless start
111202520			F20 frequency with wireless start
111202525	Ø200 mm.	2.75 m.	D25 pump with wireless start
111202530			F30 frequency with wireless start
111202540			F40 frequency with wireless start
111232520			F20 frequency with wireless start
111232525	Ø230 mm.	2.75 m.	D25 pump with wireless start
111232530			F30 frequency with wireless start
111232540			F40 frequency with wireless start

Customised solutions are developed and manufactured at our factory, so we are close to the process from A-Z.

Accessories for Alpha



ITEM NO. FLEX EXTENSION HANDLE

1412151	210*510 Complete
1412161	210*610 Complete
1412171	210*710 Complete
1412181	210*810 Complete
1412191	210*910 Complete
14121125	210*1210 Complete
1413151	310*510 Complete
1413161	310*610 Complete
1413171	310*710 Complete
1413181	310*810 Complete
1413191	310*910 Complete
14131121	310*1210 Complete
1414151	410*510 Complete
1414161	410*610 Complete
1414171	410*710 Complete
1414181	410*810 Complete
1414191	410*910 Complete
14141121	410*1210 Complete
1415151	510*510 Complete
1415161	510*610 Complete
1415171	510*710 Complete
1415181	510*810 Complete
1415191	510*910 Complete
14151121	510*1210 Complete
1417151	710*510 Complete
1417161	710*610 Complete
1417171	710*710 Complete
1417181	710*810 Complete
1417191	710*910 Complete
14171121	710*1210 Complete

ITEM NO. BALANCE FOR EXTENSION HANDLE

241203525	2-3.5 kg 2.5m Ø80-Ø120
241306025	3-6 kg 2.5m Ø80-Ø120



ITEM NO. FIXED EXTENSION HANDLE

141151	510 mm complete
141161	610 mm complete
141171	710 mm complete
141181	810 mm complete
141191	910 mm complete
141121	1210 mm complete



ITEM NO. ALPHA LIFTERS

1211225	Ø120 L = 2750 without pump
1211425	Ø140 L = 2750 without pump
1211625	Ø160 L = 2750 without pump
1211825	Ø180 L = 2750 without pump
1212025	Ø200 L = 2750 without pump
1212325	Ø230 L = 2750 without pump

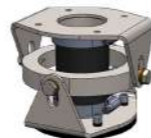


ITEM NO. EXTENSION HANDLE LMC

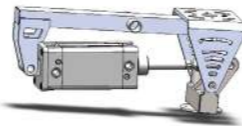
1414051	400*510 max. Ø180
1414071	400*710 max. Ø180
1414091	400*910 max. Ø180
1416051	600*510 max. Ø180
1416071	600*710 max. Ø180
1416091	600*910 max. Ø180



Swivel endless rotation
Item no. 151500 Endless rotation
Part no. 151501 Endless rotation
4-position



Ball joint
Item no. 151302



Pneumatic tilt. Unit (Max. 100kg)
Item no. 151999



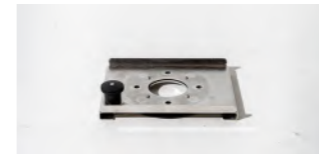
Extension handle LMC Kit set
Item no. 142395



Extension handle Kit set
Item no. 142399



Rocker joint
Item no. 151300 standard
Item no. 151301 with a lock



Upper quick coupling max. 175 kg
Item no. 151100



Lower quick coupling max. 175 kg
Item no. 151200



Release valve
Item no. 151600 standard
Item no. 151700 extended



Yoke 180° tilt manual. Without suction foot
Item no. 162800



Air coil in lift hose incl. mounting
Item no. 172699



Stainless steel handle + top f. complete
Item no. 182599S



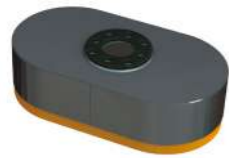
Vacuum pump 802 flow 40 m³ 80 vacuum 230V
Item no. 231804



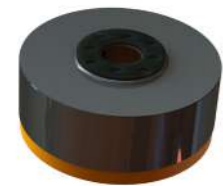
Alpha on column jib crane.

Alpha suction feet

Safety factor for horizontal lifting



ITEM NO.	OVAL	HOSE DIAMETER MM.					
		120	140	160	180	200	230
161175275	Sack suction foot 175*275	2.7					
161205370	Sack suction foot 205*370	4.7	3.4	2.6			
161260455	Sack suction foot 260*455	7.6	5.6	4.3	3.4	2.8	
161175275G	Grid 175*275						
161205370G	Grid 205*370						
161260455G	Grid 260*455						



ITEM NO.	ROUND	HOSE DIAMETER MM.					
		120	140	160	180	200	230
161250	Round suction foot Ø250	4.3	3.2				
161300	Round suction foot Ø300	6.3	5.2	3.5	2.8		
1161320	Round suction foot Ø320	7.1	5.5	4.0	3.2	2.6	
161360	Round suction foot Ø360	9.0	6.6	5.1	4.0	3.2	



ITEM NO.	SUCTION FOOT	HOSE DIAMETER MM.					
		120	140	160	180	200	230
161150210	Suction foot 150*210	2.8					
161120315	Suction foot 120*315	3.3	2.5				
161200290	Suction foot 200*290	5.1	3.8	2.9			
161200315	Suction foot 200*315	5.6	4.1	3.1	2.5		
161100430	Suction foot 100*430	3.8	2.8				



ITEM NO.	SUCTION BOOM 2-CUP ADJUSTABLE	HOSE DIAMETER MM.					
		120	140	160	180	200	230
16121002005	100*200 mm Boom 500 mm						
16121002008	100*200 mm Boom 800 mm						
161210020012	100*200 mm Boom 1200 mm	3.5	2.6				
161210020018	100*200 mm Boom 1800 mm						
16121203155	120*315 mm Boom 500 mm						
16121203158	120*315 mm Boom 800 mm						
161212031514	120*315 mm Boom 1200 mm	6.7	4.9	3.8	3.0		
161212031518	120*315 mm Boom 1800 mm						
16121502105	150*210 mm Boom 500 mm						
16121502108	150*210 mm Boom 800 mm						
161215021012	150*210 mm Boom 1200 mm	5.6	4.1	3.1	2.5		
161215021018	150*210 mm Boom 1800 mm						
16122002905	200*290 mm Boom 500 mm						
16122002908	200*290 mm Boom 800 mm						
161220029012	200*290 mm Boom 1200 mm	10.3	7.5	5.8	4.6	3.7	2.8
161220029018	200*290 mm Boom 1800 mm						
16122003155	200*315 mm Boom 500 mm						
16122003158	200*315 mm Boom 800 mm						
161220031512	200*315 mm Boom 1200 mm	11.1	8.2	6.3	5.0	4.0	3.0
161220031518	200*315 mm Boom 1800 mm						

Safety factor for horizontal lifting



ITEM NO.	SUCTION BOOM 4-CUP ADJUSTABLE	HOSE DIAMETER MM.					
		120	140	160	180	200	230
161410020086	100*200 mm Boom 800 mm arms 600 mm	7.1	5.2	4.0	3.1	2.5	
161412031586	120*315 mm Boom 800 mm arms 600 mm	13.4	9.8	7.5	5.9	4.8	3.6
161415021086	150*210 mm Boom 800 mm arms 600 mm	11.1	8.2	6.3	5.0	4.0	3.0
161420029086	200*290 mm Boom 800 mm arms 600 mm	20.5	15.1	11.5	9.1	7.4	5.6
161420031586	200*315 mm Boom 800 mm arms 600 mm	22.3	16.4	12.5	9.9	8.0	6.1
1614100200126	100*200 mm Boom 1200 mm arms 600 mm	7.1	5.2	4.0	3.1	2.5	
1614120315126	120*315 mm Boom 1200 mm arms 600 mm	13.4	9.8	7.5	5.9	4.8	3.6
1614150210126	150*210 mm Boom 1200 mm arms 600 mm	11.1	8.2	6.3	5.0	4.0	3.0
1614200290126	200*290 mm Boom 1200 mm arms 600 mm	20.5	15.1	11.5	9.1	7.4	5.6
1614200315126	200*315 mm Boom 1200 mm arms 600 mm	22.3	16.4	12.5	9.9	8.0	6.1
1614100200186	100*200 mm Boom 1800 mm arms 600 mm	7.1	5.2	4.0	3.1	2.5	
1614120315186	120*315 mm Boom 1800 mm arms 600 mm	13.4	9.8	7.5	5.9	4.8	3.6
1614150210186	150*210 mm Boom 1800 mm arms 600 mm	11.1	8.2	6.3	5.0	4.0	3.0
1614200290186	200*290 mm Boom 1800 mm arms 600 mm	20.5	15.1	11.5	9.1	7.4	5.6
1614200315186	200*315 mm Boom 1800 mm arms 600 mm	22.3	16.4	12.5	9.9	8.0	6.1



ITEM NO.	SUCTION BOOM 4-CUP ADJUSTABLE	HOSE DIAMETER MM.					
		120	140	160	180	200	230
161411086	Ø110 mm Boom 800 mm arms 600 mm	3.4	2.5				
161415086	Ø150 mm Boom 800 mm arms 600 mm	6.3	4.6	3.5	2.8		
1614110126	Ø110 mm Boom 1200 mm arms 600 mm	3.4	2.5				
1614150126	Ø150 mm Boom 1200 mm arms 600 mm	6.3	4.6	3.5	2.8		



ITEM NO.	VULCANO	HOSE DIAMETER MM.					
		120	140	160	180	200	230
1628350	Suction foot Ø350						
16283502	Suction lip Ø350						
16283502M	Suction lip Ø350 with EPDM 30mm						
1628440	Suction foot Ø440						
16284402	Suction lip Ø440						
16284402M	Suction lip Ø440 EPDM 30mm						

Spare parts for Alpha



ITEM NO. LIFTING HOSE COMPLETE

172610252	Ø100*2750 with Top & Bottom
172610402	Ø100*4000 with Top & Bottom
172612252	Ø120*2750 with Top & Bottom
172612302	Ø120*3000 with Top & Bottom
172612402	Ø120*4000 with Top & Bottom
172614252	Ø140*2750 with Top & Bottom
172614302	Ø140*3000 with Top & Bottom
172614402	Ø140*4000 with Top & Bottom
172616252	Ø160*2750 with Top & Bottom
172616302	Ø160*3000 with Top & Bottom
172616402	Ø160*4000 with Top & Bottom
172618252	Ø180*2750 with Top & Bottom
172618302	Ø180*3000 with Top & Bottom
172618402	Ø180*4000 with Top & Bottom
172620252	Ø200*2750 with Top & Bottom
172620302	Ø200*3000 with Top & Bottom
172620402	Ø200*4000 with Top & Bottom
172623252	Ø230*2750 with Top & Bottom
172623302	Ø230*3000 with Top & Bottom
172623402	Ø230*4000 with Top & Bottom

ITEM NO. LIFTING HOSE LOOSE

17261025	Ø100*2750
17261040	Ø100*4000
17261225	Ø120*2750
17261230	Ø120*3000
17261240	Ø120*4000
17261425	Ø140*2750
17261430	Ø140*3000
17261440	Ø140*4000
17261625	Ø160*2750
17261630	Ø160*3000
17261640	Ø160*4000
17261825	Ø180*2750
17261830	Ø180*3000
17261840	Ø180*4000
17262025	Ø200*2750
17262030	Ø200*3000
17262040	Ø200*4000
17262325	Ø230*2750
17262330	Ø230*3000
17262340	Ø230*4000

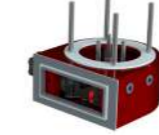


ITEM NO. PROTECTIVE SOCK

172610251	Ø100*2750
172610401	Ø100*4000
172612251	Ø120*2750
172612301	Ø120*3000
172612401	Ø120*4000
172614251	Ø140*2750
172614301	Ø140*3000
172614401	Ø140*4000
172616251	Ø160*2750
172616301	Ø160*3000
172616401	Ø160*4000
172618251	Ø180*2750
172618301	Ø180*3000
172618401	Ø180*4000
172620251	Ø200*2750
172620301	Ø200*3000
172620401	Ø200*4000
172623251	Ø230*2750
172623301	Ø230*3000
172623401	Ø230*4000



Manoeuvring box Alpha
Item no. 182502



Vacuum housing Alpha
Item no. 182501



Manoeuvring handle
Item no. 182500 Ø100 to Ø180
Item no. 182550 Ø200 to Ø230



Filter element
Item no. 132511



Complete filter housing
Item no. 132510 standard
Item no. 132510S stainless steel



Bottom valve complete
Item no. 182504



ITEM NO. ADAPTER TOP COMPLETE

1725124	Ø120
1725144	Ø140
1725164	Ø160
1725184	Ø180
1725204	Ø200
1725234	Ø230



ITEM NO. SACK SUCTION LIPS

1628175275	175*275 f. 161175275
1628205370	205*370 f. 161205370
1628260455	260*455 f. 161260455
1628250	Ø250
1628300	Ø300
1628320	Ø320
1628360	Ø360



ITEM NO. SUCTION LIPS

1628100200	100*200 Black
1628100200W	100*200 Grey
1628120315	120*315 Black
1628150210	150*210 Black
1628150210W	150*210 Grey
1628200290	200*290 Black
1628200290W	200*290 Grey
1628200315	200*315 Black
1628200315W	200*315 Grey
162895430	95*430 Black

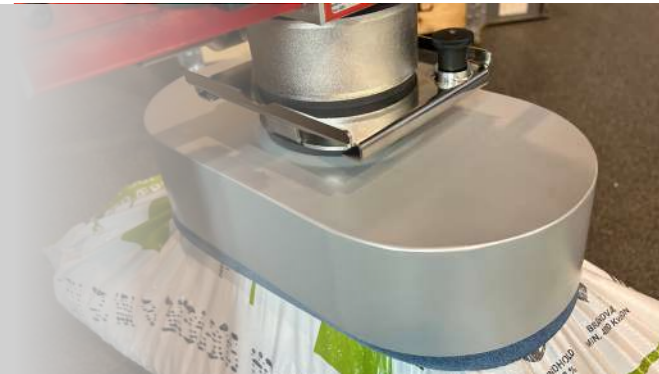


ITEM NO. BLUE SUCTION LIP

16282053701	Blue 205*370 f. 161205370
16282604551	Blue 260*455 f. 161260455

Blue Suction Cup JLM's Blue suction cup for sack suction feet is very suitable for the food industry, as the blue colour is an unnatural colour where visual detection can be made.

Please note that the suction lip is not approved according to FDA or EU Directive 2004/35, but we can guarantee that no hazardous chemicals have been used.



Alpha with LMC extension handle with release valve and balance for stacking at heights



My

My is the small classic vacuum lifter Our vacuum lifter model My is the small classic vacuum lifter for lifting items up to 80 kg. The vacuum lifter is perfect for lifting smaller items such as cardboard boxes, wooden boards, glass, etc., and can be configured in many ways.

My has a built-in adjustment knob for unloaded and loaded height positioning. This means that the vacuum lifter's control handle is always in the desired position when the operator is not holding the control handle. One of the benefits of this is that the operator doesn't have to bend down for the control handle.

As standard, My always has wireless control of the vacuum pump built in. The On/Off button is cleverly placed on the control handle. Wireless start/stop makes it quick and easy for the operator to start and stop the pump, which helps to significantly reduce energy consumption. Just as it gives the operator



My vacuum lifter that fits the small hand perfectly. Easy and safe one-handed operation. In a nutshell: Ergonomics in a class of its own



confidence to stand with the control handle when starting or stopping the vacuum pump.

My has a very extensive range of accessories and JLM is constantly looking to develop and optimise our vacuum lifters. My is also available in stainless steel and we have the option to deliver to ATEX zone II.

- Manoeuvring handle with superior ergonomics
- Large accessory / equipment range
- Intuitive controls that follow the operator's movements
- Height positioning with and without load



LIFTING UNIT		80	100	120	140
Lifting hose ø	[mm]	80	100	120	140
Max. capacity	[kg]	30	47	63	80
Lifting hose L	[mm]	2750/3000/4000			

PUMP		802	902	D25	F20
Power	[kW]	1.3	2.4	3.0	3.0
Max. flow	[m³/h]	40	90	180	120
Vacuum depth	[%]	90	90	50	70
Noise level (without a sound box)	[dB(A)]	74	77	70	75
Noise level (in a sound box)	[dB(A)]	64	65	65	60



D25 pump
Item no. 131070



F20 pump with frequency
Item no. 131200



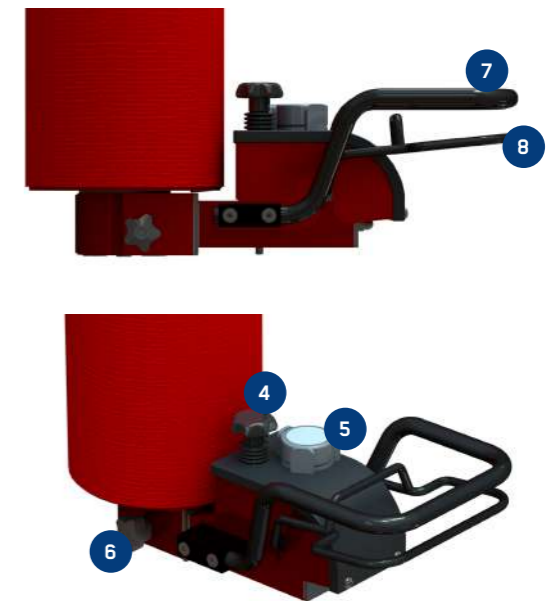
802 pump
Item no. 231802



902 pump
Item no. 231902



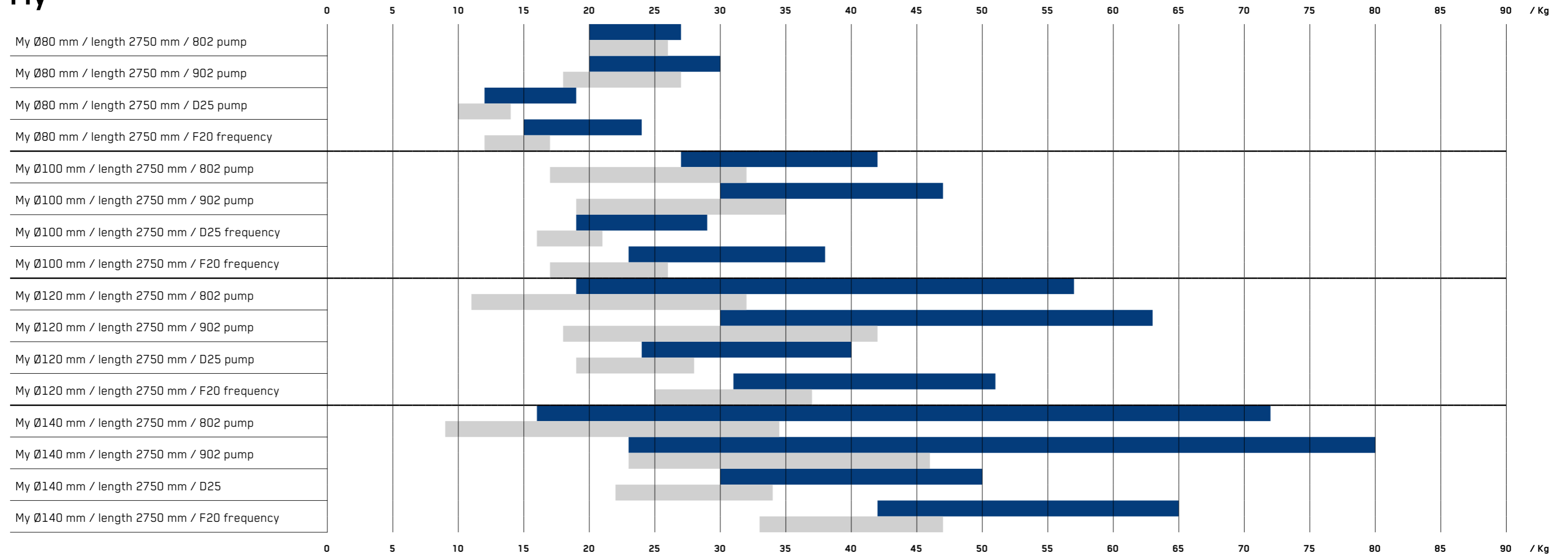
Frequency



- FUNCTIONALITIES**
1. Suspension eye with a swivel
 2. Lifting hose
 3. Protective sock
 4. Height positioning with load
 5. Wireless start/stop of the vacuum pump
 6. Height positioning without load
 7. Control handle
 8. Control lever for raising/lowering function

■ Non-porous
■ Porous

My



This chart shows the recommended "weight range" in kg to lift the item in relation to the current lifting hose and vacuum pump combination.

The chart is indicative only and should be taken with caution as many factors influence the lift. Try to choose a lifting hose with as large a diameter as possible. This gives a "softer" and lighter movement in the lift.

A complete My lifting system consists of



Lifting hose with handle



Sock



Pump



Filter housing



Wireless start/stop

ITEM NO.	COMPLETE MY LIFTING SYSTEM		
211082520			F20 with wireless start
211082525			D25 with wireless start
211082530	Ø80 mm.	2.75 m.	F30 with wireless start
2110825802			P802 with wireless start
2110825902			P902 with wireless start
211102520			F20 with wireless start
211102525			D25 with wireless start
211102530	Ø100 mm.	2.75 m.	F30 with wireless start
2111025802			P802 with wireless start
2111025902			P902 with wireless start
211122520			F20 with wireless start
211122525			D25 with wireless start
211122530	Ø120 mm	2.75 m.	F30 with wireless start
2111225802			P802 with wireless start
2111225902			P902 with wireless start
211142520			F20 with wireless start
211142525			D25 with wireless start
211142530	Ø140 mm.	2.75 m.	F30 with wireless start
2111425802			P802 with wireless start
2111425902			P902 with wireless start

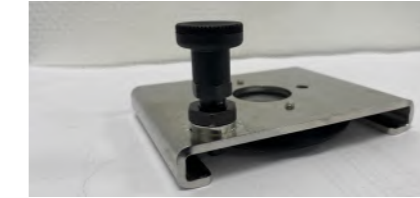
Accessories for My



ITEM NO. **ROCKER JOINT**

251300 Standard

251301 With lock



ITEM NO. **QUICK COUPLING UPPER, MAX 80 KG.**

251100



ITEM NO. **LOWER QUICK COUPLING, MAX 80 KG.**

251200



ITEM NO. **RELEASE VALVE**

251600

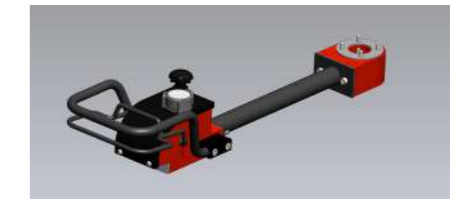
251601 Extended



ITEM NO. **SWIVEL ENDLESS ROTATION**

251500 Endless rotation

251501 Endless rotation 4-position



ITEM NO. **FIXED EXTENSION**

2425250 Handle extension 250 mm

2425500 Handle extension 500 mm

2425750 Handle extension 750 mm



ITEM NO. **FLEX. EXTENSION HANDLE**

2412151 210*510 mm.

2413131 310*310 mm.

2412530 250*300 mm.

2412550 250*500 mm.

2412570 250*700 mm.

2414530 450*300 mm.

2414550 450*500 mm.

2414570 450*700 mm.

2416530 650*300 mm.

2416550 650*500 mm.

2416570 650*700 mm.



ITEM NO. **LMC EXTENSION HANDLE**

2414151 410*510 mm.

2414171 410*710 mm.

2414191 410*910 mm.

2416151 610*510 mm.

2416171 610*710 mm.

2416191 610*910 mm.



ITEM NO. **MY LIFTER**

2210825 Ø80 L=2750 without pump

2211025 Ø100 L=2750 without pump

2211225 Ø120 L=2750 without pump

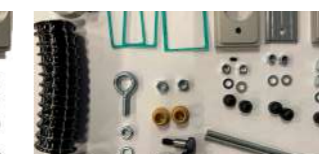
2214825 Ø140 L=2750 without pump



Extension handle LMC Kit set
Item no. 242395



Extension handle Fixed. Kit sets
Item no. 242398

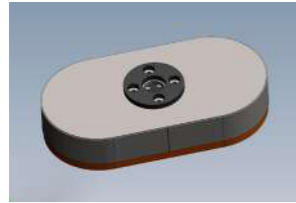


Extension handle Flex. Kit sets
Item no. 242399

Additional stainless steel handle + top
for complete
Item no. 282599S

My suction feet

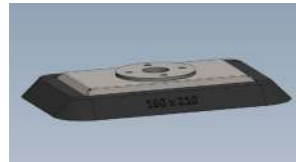
Safety factor for horizontal lifting



ITEM NO.	OVAL	HOSE DIAMETER MM.			
		80	100	120	140
261100315	Sack suction foot 100*315	3.8	2.4		
261125245	Sack suction foot 125*245	3.7	2.4		
261150290	Sack suction foot 150*290	5.6	3.6	2.5	
261100315G	Grid for sack suction foot 100*315				
261125245G	Grid for sack suction foot 125*245				
261150290G	Grid for sack suction foot 150*290				



ITEM NO.		HOSE DIAMETER MM.			
		80	100	120	140
261000	Tikan 4*Ø110 C=140	7.6	4.8	3.4	2.5
261001	Tokan 2*Ø110 C=140	3.8	2.4		
261005	Post yoke 2*Ø150 C=240 with a hook	7.0	4.5	3.1	2.3
261150	Suction cup NPK Ø150 with My - Tau adapter	3.5	2.3		
261150S	Suction cup SIL Ø150 with My - Tau adapter	3.5	2.3		
261006	Suction foot H 4*Ø110 C=200 * C=400	7.6	4.8	3.4	2.5



ITEM NO.		HOSE DIAMETER MM.			
		80	100	120	140
261100200	Suction foot 100*200	4.0	2.5		
261150210	Suction foot 150*210	6.3	4.0	2.8	
261095430	Suction foot 95*430	8.1	5.2	3.7	2.7
261120315	Suction foot 130*315	7.5	4.8	3.3	2.5
261200290	Suction foot 200*290	11.5	7.4	5.1	3.8
261200315	Suction foot 200*315	1.55	8.0	5.6	4.1



ITEM NO.	SUCTION BOOM 2-CUP ADJUSTABLE	HOSE DIAMETER MM.			
		80	100	120	140
26121002005	100*200 mm Boom 500 mm	8.0	5.1	3.5	2.6
26121002008	100*200 mm Boom 800 mm				
26121203155	120*315 mm Boom 500 mm	15.0	9.6	6.7	4.9
26121203158	120*315 mm Boom 800 mm				
26121502105	150*210 mm Boom 500 mm	12.5	8.0	5.6	4.1
26121502108	150*210 mm Boom 800 mm				
26122002905	200*290 mm Boom 500 mm	23.1	14.8	10.3	7.5
26122002908	200*290 mm Boom 800 mm				
26122003155	200*315 mm Boom 500 mm	25.1	16.1	11.1	8.2
26122003158	200*315 mm Boom 800 mm				



Post yoke 2*Ø150 C=240 with a hook
Item no. 261005



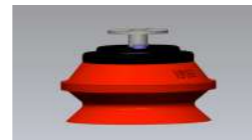
Tokan 2*Ø110 C=140
Item no. 261001



Tikan 4*Ø110 C=140
Item no. 261000



Fikan 4*Ø110 C=140
Item no. 261004



Suction cup Ø150
Item no. 261150 NPK
Item no. 261150S SIL

Suction foot H 4*Ø110 C=200 * C=400
Item no. 261006



ITEM NO.	SUCTION CUP SILENCE 2 PCS.	HOSE DIAMETER MM.			
		80	100	120	140
2611002004	100*200 C=400	8.0	5.1	3.5	2.6
2611002005	100*200 C=500	8.0	5.1	3.5	2.6
2611104	Ø110 C=400	3.8	2.4		
2611105	Ø110 C=500	3.8	2.4		
2611502104	150*210 C=400	12.5	8.0	5.6	4.1
2611502105	150*210 C=500	12.5	8.0	5.6	4.1
2611504	Ø150 C=400	7.0	4.5	3.1	2.3
2611505	Ø150 C=500	7.0	4.5	3.1	2.3



ITEM NO.	SUCTION BOOM 2*100*200 BOOM 500 FIXED	HOSE DIAMETER MM.			
		80	100	120	140
26121002005F	2*100*200 Boom 500 Fixed	8.0	5.1	3.5	2.6



Alpha fitted with a Vulcano suction cup

Spare parts for My



ITEM NO. LIFTING HOSE COMPLETE

272608252	Ø80*2750 with Top & Bottom
272608302	Ø80*3000 with Top & Bottom
272608402	Ø80*4000 with Top & Bottom
272610252	Ø100*2750 with Top & Bottom
272610302	Ø100*3000 with Top & Bottom
272610402	Ø100*4000 with Top & Bottom
272612252	Ø120*2750 with Top & Bottom
272612302	Ø120*3000 with Top & Bottom
272612402	Ø120*4000 with Top & Bottom
272614252	Ø140*2750 with Top & Bottom
272614302	Ø140*3000 with Top & Bottom
272614402	Ø140*4000 with Top & Bottom

ITEM NO. LIFTING HOSE LOOSE

1726825	Ø80*2750
1726830	Ø80*3000
1726840	Ø80*4000
17261025	Ø100*2750
17261030	Ø100*3000
17261040	Ø100*4000
17261225	Ø120*2750
17261230	Ø120*3000
17261240	Ø120*4000
17261425	Ø140*2750
17261430	Ø140*3000
17261440	Ø140*4000



ITEM NO. PROTECTIVE SOCK

17268251	Ø80*2750
17268301	Ø80*3000
17268401	Ø80*4000
172610251	Ø100*2750
172610301	Ø100*3000
172610401	Ø100*4000
172612251	Ø120*2750
172612301	Ø120*3000
172612401	Ø120*4000
172614251	Ø140*2750
172614301	Ø140*3000
172614401	Ø140*4000



ITEM NO. SUCTION LIPS

1628100200	100*200 Black
1628100200W	100*200 Grey
1628120315	120*315 Black
1628150210	150*210 Black
1628150210W	150*210 Grey
1628200290	200*290 Black
1628200290W	200*290 Grey
1628200315	200*315 Black
1628200315W	200*315 Grey
162895430	95*430 Black



ITEM NO. SACK SUCTION LIPS

2628100315	100*315 f. 261100315
2628125245	125*245 f. 261125245
2628150290	150*290 f. 261150290



Complete filter housing
Item no. 132510 standard
Item no. 132510S stainless steel



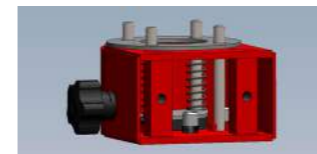
Manoeuvring handle My
Item no. 282500 Ø80 to Ø120
Item no. 282599 Ø140



Filter element
Item no. 132511



Manoeuvring box My
Item no. 282502



Vacuum housing My
Item no. 282501



My with flexible extension handle and release valve

Tau I

Tau is the highly explosive and aggressive vacuum lifter

Tau is a vacuum lifter with pistol grip for lifting items up to 65 kg. The vacuum lifter is perfect for lifting smaller items such as cardboard boxes, sheets, etc., and where a high frequency in lifting speed is required.

Tau is especially suitable in logistics centres or generally where high-speed lifting is required.

Tau has a built-in adjustment knob for height positioning without load.

As standard, Tau always has wireless control of the vacuum pump built-in. The On/Off button is cleverly placed on the control handle. Wireless start/stop makes it quick and easy for the operator to start and stop the pump, which helps to significantly reduce energy consumption.

Just as it gives the operator confidence to stand with the control handle when starting or stopping the vacuum pump.



Tau II

Tau II is the highly explosive and aggressive vacuum lifter

Tau II is the vacuum lifter with pistol grip, where the suction cup can tilt 90 degrees and rotate freely in 360 degrees.

Tau is a vacuum lifter with pistol grip for lifting items up to 65 kg. The vacuum lifter is perfect for lifting smaller items such as cardboard boxes, sheets, etc., and where a high frequency in lifting speed is required.



Tau has a very extensive range of accessories and JLM is constantly looking to develop and optimise our vacuum lifters.

LIFTING UNIT		80	100	120
Lifting hose ø	[mm]	80	100	120
Max. capacity	[kg]	30	47	65
Lifting hose L	[mm]	2750/3000/4000		

PUMP		802	902
Power	[kW]	1.3	2.4
Max. flow	[m³/h]	40	90
Vacuum depth	[%]	90	90
Noise level (without a sound box)	[dB(A)]	74	77
Noise level (in a sound box)	[dB(A)]	64	65



802 pump
Item no. 231802

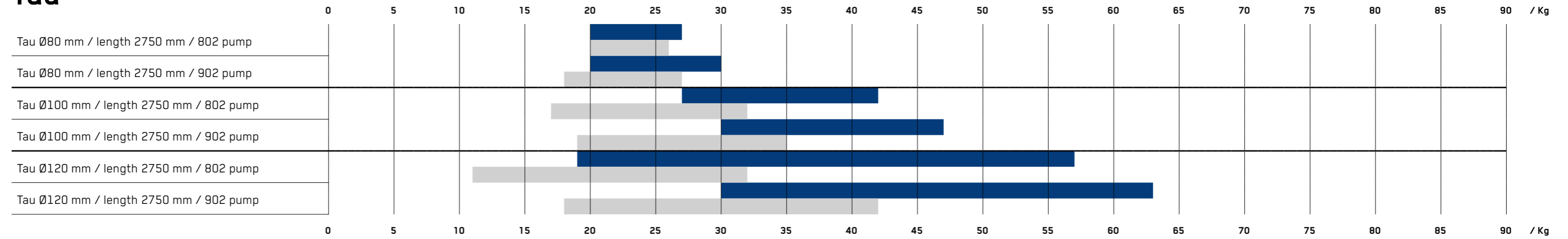


902 pump
Item no. 231902

Tau vacuum lifters are best suited for high-speed lifting. The vacuum lifter is perfectly suited for lifting packages, cardboard boxes, sheets and can be configured to lift items up to 65 kg.

■ Non-porous
■ Porous

Tau



This chart shows the recommended "weight range" in kg to lift the item in relation to the current lifting hose and vacuum pump combination.

The chart is indicative only and should be taken with caution as many factors influence the lift. Try to choose a lifting hose with as large a diameter as possible. This gives a "softer" and lighter movement in the lift.

The complete Tau lifting system consists of



Lifting hose with handle



Sock



Pump



Filter housing



Wireless start/stop

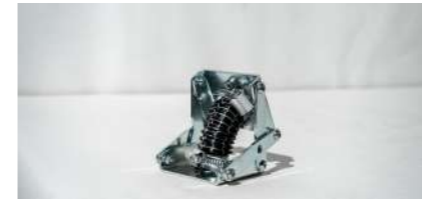
ITEM NO. COMPLETE TAU I LIFTING SYSTEM

3110825802	Ø80 mm.	2.75 m.	Pump 802 with wireless start
3110825902			Pump 902 with wireless start
3111025802	Ø100 mm.	2.75 m.	Pump 802 with wireless start
3111025902			Pump 902 with wireless start
3111225802	Ø120 mm	2.75 m.	Pump 802 with wireless start
3111225902			Pump 902 with wireless start

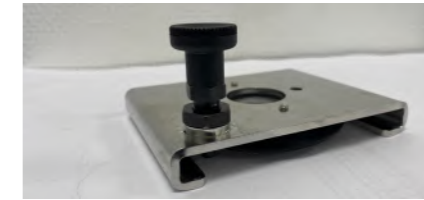
ITEM NO. COMPLETE TAU II LIFTING SYSTEM

31108257802	Ø80 mm.	2.75 m.	Rotation/Tilt Pump 802 with wireless start
31108257902			Rotation/Tilt Pump 902 with wireless start
31110257802	Ø100 mm.	2.75 m.	Rotation/Tilt Pump 802 with wireless start
31110257902			Rotation/Tilt Pump 902 with wireless start
31112257802	Ø120 mm	2.75 m.	Rotation/Tilt Pump 802 with wireless start
31112257902			Rotation/Tilt Pump 902 with wireless start

Accessories for Tau



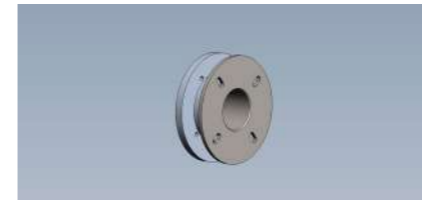
ITEM NO.	ROCKER JOINT
251300	Standard
251301	With lock



ITEM NO.	QUICK COUPLING UPPER, MAX 65 KG.
251100	Upper quick coupling



ITEM NO.	LOWER QUICK COUPLING, MAX 65 KG.
251200	Lower quick coupling



ITEM NO.	SWIVEL ENDLESS ROTATION
251500	Endless rotation
251501	Endless rotation 4-position



ITEM NO.	MANOEUVRING HANDLE TAU I
3825100	Ø100
3825100S	Ø100 Stainless steel
3825120	Ø120



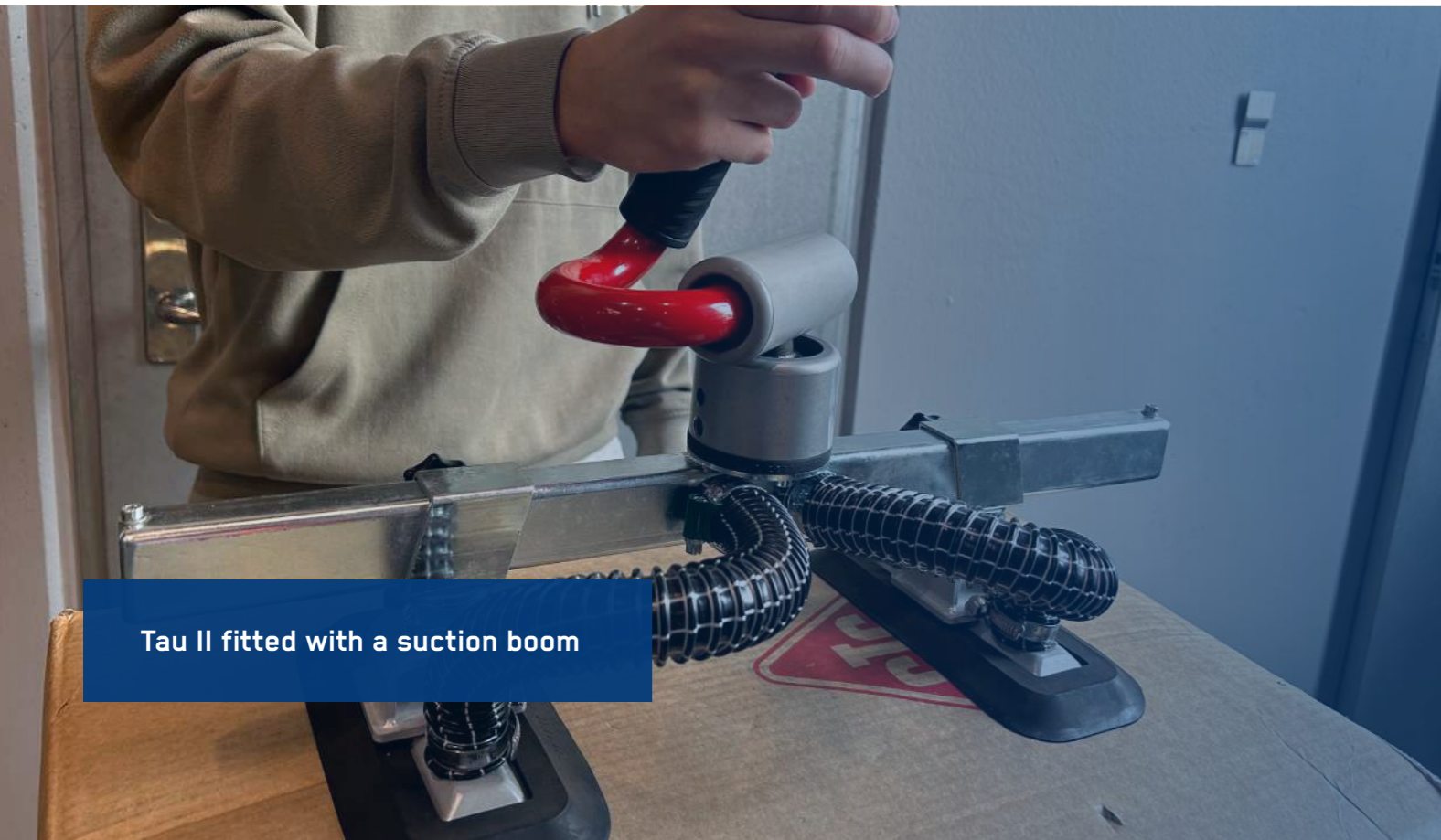
ITEM NO.	MANOEUVRING HANDLE TAU II
3825101	Ø100 with tilt+rotation
3825121	Ø120 with tilt+rotation



ITEM NO.	TAU IN LIFTERS WITHOUT PUMP
3210825	Ø80 L=2750
3211025	Ø100 L=2750
3211225	Ø120 L=2750



ITEM NO.	TAU IN LIFTERS WITHOUT PUMP
32108252	Ø80 tilt/rotate L=2750
32110252	Ø100 tilt/rotate L=2750
3212252	Ø120 tilt/rotate L=2750



Tau II fitted with a suction boom

Other accessories for Tau

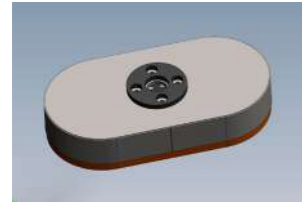


Box yoke for E2 plastic boxes
Item no. 261002



Box yoke E2 plastic boxes
Item no. 261003

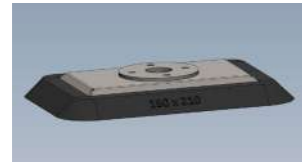
Tau suction feet



ITEM NO.	OVAL	Safety factor for horizontal lifting		
		HOSE DIAMETER MM.		
		80	100	120
261100315	Sack suction foot 100*315	3.8	2.4	
261125245	Sack suction foot 125*245	3.7	2.4	
261150290	Sack suction foot 150*290	5.6	3.6	2.5
261100315G	Grid for sack suction foot 100*315			
261125245G	Grid for sack suction foot 125*245			
261150290G	Grid for sack suction foot 150*290			



ITEM NO.		Safety factor for horizontal lifting		
		HOSE DIAMETER MM.		
		80	100	120
261000	Tikan 4*Ø110 C=140	7.6	4.8	3.4
261001	Tokan 2*Ø110 C=140	3.8	2.4	
261005	Post yoke 2*Ø150 C=240 with a hook	7.0	4.5	3.1
261150	Suction cup NPK Ø150 with My - Tau adapter	3.5	2.3	
261150S	Suction cup SIL Ø150 with My - Tau adapter	3.5	2.3	
261006	Suction foot H 4*Ø110 C=200 * C=400	7.6	4.8	3.4



ITEM NO.		Safety factor for horizontal lifting		
		HOSE DIAMETER MM.		
		80	100	120
261100200	Suction foot 100*200	4.0	2.5	
261150210	Suction foot 150*210	6.3	4.0	2.8
261095430	Suction foot 95*430	8.1	5.2	3.7
261120315	Suction foot 130*315	7.5	4.8	3.3
261200290	Suction foot 200*290	11.5	7.4	5.1
261200315	Suction foot 200*315	1.55	8.0	5.6



ITEM NO.	SUCTION BOOM 2-CUP ADJUSTABLE	Safety factor for horizontal lifting		
		HOSE DIAMETER MM.		
		80	100	120
26121002005	100*200 mm Boom 500 mm	8.0	5.1	3.5
26121002008	100*200 mm Boom 800 mm			
26121203155	120*315 mm Boom 500 mm	15.0	9.6	6.7
26121203158	120*315 mm Boom 800 mm			
26121502105	150*210 mm Boom 500 mm	12.5	8.0	5.6
26121502108	150*210 mm Boom 800 mm			
26122002905	200*290 mm Boom 500 mm	23.1	14.8	10.3
26122002908	200*290 mm Boom 800 mm			
26122003155	200*315 mm Boom 500 mm	25.1	16.1	11.1
26122003158	200*315 mm Boom 800 mm			



Post yoke 2*Ø150 C=240 with a hook
Item no. 261005



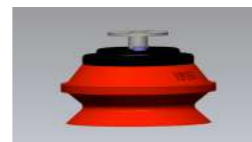
Tikan 2*Ø110 C=140
Item no. 261001



Tikan 4*Ø110 C=140
Item no. 261000



Fikan 4*Ø110 C=140
Item no. 261004



Suction cup Ø150
Item no. 261150 NPK

Suction foot H 4*Ø110 C=200 * C=400
Item no. 261006



ITEM NO.	SUCTION CUP SILENCE 2 PCS.	Safety factor for horizontal lifting		
		HOSE DIAMETER MM.		
		80	100	120
2611002004	100*200 C=400	8.0	5.1	3.5
2611002005	100*200 C=500	8.0	5.1	3.5
2611104	Ø110 C=400	3.8	2.4	
2611105	Ø110 C=500	3.8	2.4	
2611502104	150*210 C=400	12.5	8.0	5.6
2611502105	150*210 C=500	12.5	8.0	5.6
2611504	Ø150 C=400	7.0	4.5	3.1
2611505	Ø150 C=500	7.0	4.5	3.1



Tau I fitted with a suction foot

Spare parts for Tau



ITEM NO. LIFTING HOSE COMPLETE

272608252	Ø80*2750 with Top & Bottom
272608302	Ø80*3000 with Top & Bottom
272608402	Ø80*4000 with Top & Bottom
272610252	Ø100*2750 with Top & Bottom
272610302	Ø100*3000 with Top & Bottom
272610402	Ø100*4000 with Top & Bottom
272612252	Ø120*2750 with Top & Bottom
272612302	Ø120*3000 with Top & Bottom
272612402	Ø120*4000 with Top & Bottom

ITEM NO. LIFTING HOSE LOOSE

1726825	Ø80*2750
1726830	Ø80*3000
1726840	Ø80*4000
17261025	Ø100*2750
17261030	Ø100*3000
17261040	Ø100*4000
17261225	Ø120*2750
17261230	Ø120*3000
17261240	Ø120*4000



ITEM NO. PROTECTIVE SOCK

17268251	Ø80*2750
17268301	Ø80*3000
17268401	Ø80*4000
172610251	Ø100*2750
172610301	Ø100*3000
172610401	Ø100*4000
172612251	Ø120*2750
172612301	Ø120*3000
172612401	Ø120*4000



ITEM NO. SUCTION LIPS

1628100200	100*200 Black
1628100200W	100*200 Grey
1628120315	120*315 Black
1628150210	150*210 Black
1628150210W	150*210 Grey
1628200290	200*290 Black
1628200290W	200*290 Grey
1628200315	200*315 Black
1628200315W	200*315 Grey
162895430	95*430 Black



Complete filter housing
Item no. 132510 standard
Item no. 132510S stainless steel



Filter element
Item no. 132511



Tau II fitted with a suction foot

Configuration guidelines

Choosing a lifting hose

When choosing a vacuum lifter, there are some simple basic rules to consider:

- What does the load weigh?
- What is the design and size/dimensions of the item?
- What is the porosity of the item?

The last one is almost the most important. We define porosity as either non-porous or porous.

Non-porous goes without saying. This is a completely sealed item, and by completely sealed, we mean that you absolutely cannot suck through the item or that there are no leaks in any way. Examples of completely sealed surfaces are glass, metal and plastic.

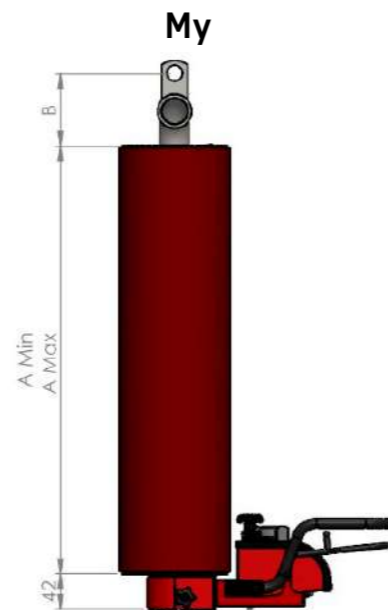
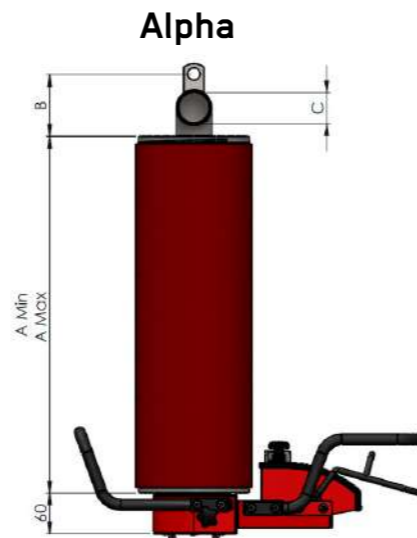
Porous items, on the other hand, are somewhat more difficult to define. As a starting point, it's a good idea to do a test before choosing which type of vacuum lifter to use. Examples of porous items are plasterboard, wooden boards, heavy cardboard boxes, plastic film packaging, concrete, polystyrene and paper bags.

The more porous an item is, the more flow m³ you want in the vacuum pump. However, if the item is non-porous, high flow means a very fast upward movement in the vacuum hose. We say that the vacuum lifter becomes aggressive. However, the vacuum depth in the vacuum pump is also an important factor. A high vacuum depth means you can "hold the item" better and you can also lift heavier items. In fact, it is also possible to get "too good a grip" on the item, making it difficult to release the item, so it may be necessary to build a release valve into the manoeuvre handle.

On pages 12-13 and 22-23 you can see some guiding recommendations on the chart for choosing vacuum lifters. Choosing suction cups for the vacuum lifter is also a very crucial element. When lifting horizontally, there must be a safety factor of 2.5. This safety factor is found by dividing the cross-sectional area of the hose by the area of the suction cup. So, the total area of the suction cup(s) must be 2.5 times larger than the cross-sectional area of the lifting hose. However, if you need to lift vertically with the suction cup, the safety factor must be 4. An exception with a safety factor of 2.5 is when using the vacuum lifter model Tau, where a safety factor of 2.3 is allowed.

Important

It is recommended that the suction cup is approximately 100 mm above the floor when the lifting hose is fitted. If not, the hose must be adapted as the suction cup must under no circumstances be sucked to the floor when the vacuum pump is activated.



A MAX. MM.	COLLAPSED SUCTION HOSE A MIN. MM.							
	Ø80	Ø100	Ø120	Ø140	Ø160	Ø180	Ø200	Ø230
2500	680	811	680	673	661	632	797	705
2750	742	885	742	734	720	689	871	768
3000	803	1014	803	794	780	745	944	832
4000	1048	1259	1048	1036	1017	970	1238	1087
B Alpha			80	80	90	90	90	90
B My	85	85	85	85				
C Alpha			Ø40	Ø40	Ø50	Ø50	Ø50	Ø50
C My	Ø25	Ø25	Ø25	Ø25				
X fac.:	0.245	0.299	0.245	0.242	0.237	0.225	0.2935	0.255

Formulas to find A min. or A max:

$$A \text{ min.} = A \text{ max.} - 90) * X + 90$$

$$A \text{ max.} = (A \text{ min.} - 90) / X + 90$$

Noise

Noise is generally a big part of our working environment and puts our hearing at high risk of hearing damage and thus serious, incurable conditions. It is therefore very important that all noise is taken seriously and minimised as much as possible.

Sound is made up of sound waves. The loudness of a sound is measured in decibels (dB). The lowest sound a human can hear is 1 dB and the highest around 140 dB. We also talk about a sound wave frequency, which is how many oscillations the sound wave has per second. A high frequency means that there are many oscillations and produces a high tone, whereas low frequency sound has few oscillations and produces a low tone. Humans can hear sounds with frequencies between 20 and 20,000 hertz.

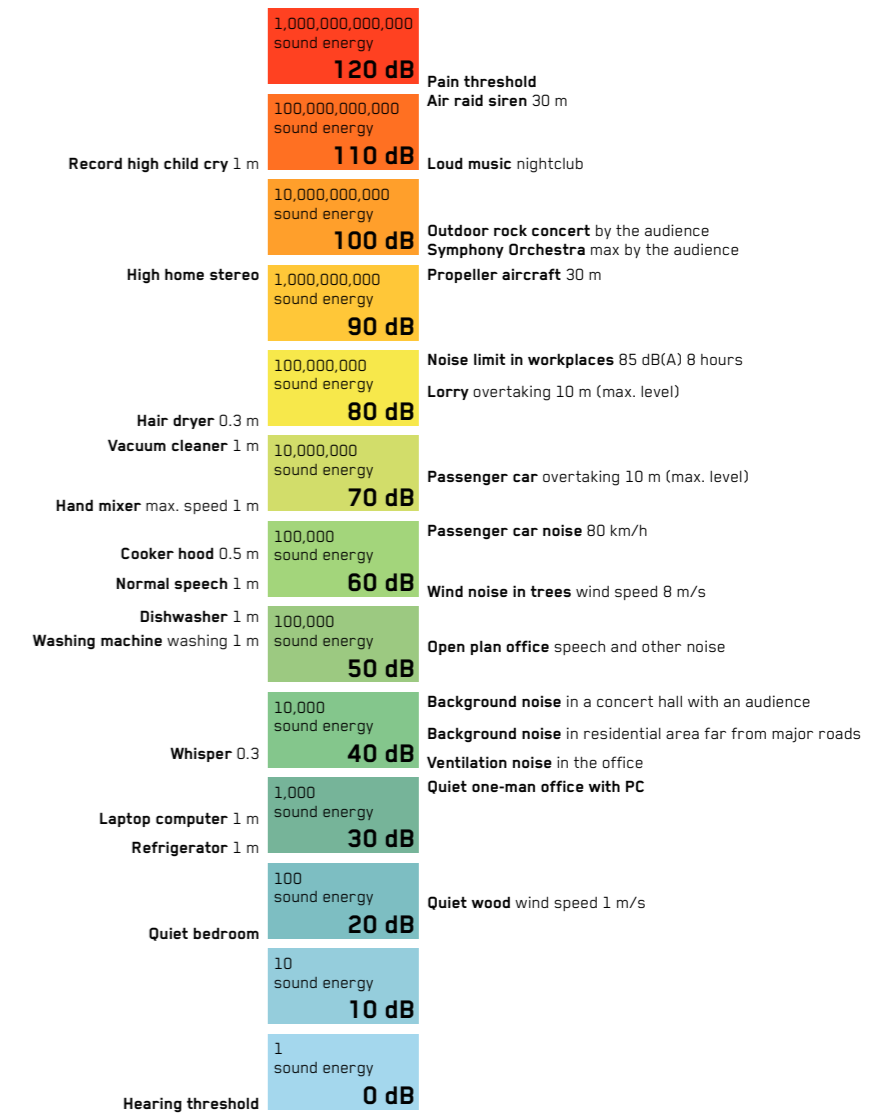
The ear perceives an incredible spectrum of sound - from a pin hitting the floor to a jet aircraft. To encompass this entire spectrum, the dB scale is logarithmic. 3dB up or down on the scale therefore means that the sound has doubled or halved. Double 80dB is not 160dB - but 83 dB. (Source: Long, Marshall (2006): "Architectural Acoustics." Elsevier Academic Press, New York, USA).

The maximum sound level you can tolerate in an 8-hour working day is 85dB. If you work in a noisy environment with sound levels above 85 dB, hearing protection is required by law.



Noise levels in everyday life

Sound pressure level dB (A)

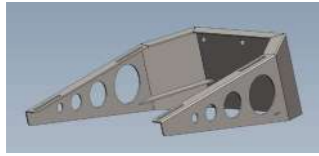


Information about noise and testing of vacuum pumps and vacuum lifters

Test: Conducted with the pump placed on the floor. Here, measurements were taken at a distance of 1 m and a height of 1.5 m.

TEST 1 PUMP TYPE	UNLOADED		LOADED	
	WITHOUT A SOUND BOX	WITH A SOUND BOX	WITHOUT A SOUND BOX	WITH A SOUND BOX
D25	70 dB	66 dB	82 dB	80 dB
F20	78 dB	60 dB	81 dB	58 dB
F30	78 dB	61 dB	81 dB	58 dB
F40	80 dB	62 dB	82 dB	60 dB
802	80 dB	66 dB	74 dB	64 dB
902	81 dB	67 dB	76 dB	65 dB

Other accessories



Shelf bracket for vacuum pump
Item no. 132700



Wireless radio control vacuum pump. Complete
Item no. 131111



Wireless radio control with timer
Item no. 131112



Receiver radio control
Item no. 131113



Transmitter radio control
Item no. 131114



Holder for transmitter
Item no. 131115



Sound box with ventilation for F pumps
Item no. 132200



Sound box for pumps D25 -802 - 902
Item no. 231500



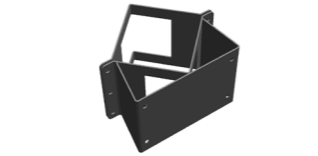
**Parking stand floor-mounted
H=1200mm**
Item no. 151518



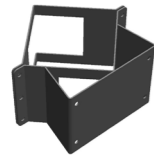
Wall-mounted parking stand
Item no. 151519



**Knife for mounting in suction foot to
break packaging**
Item no. 161500



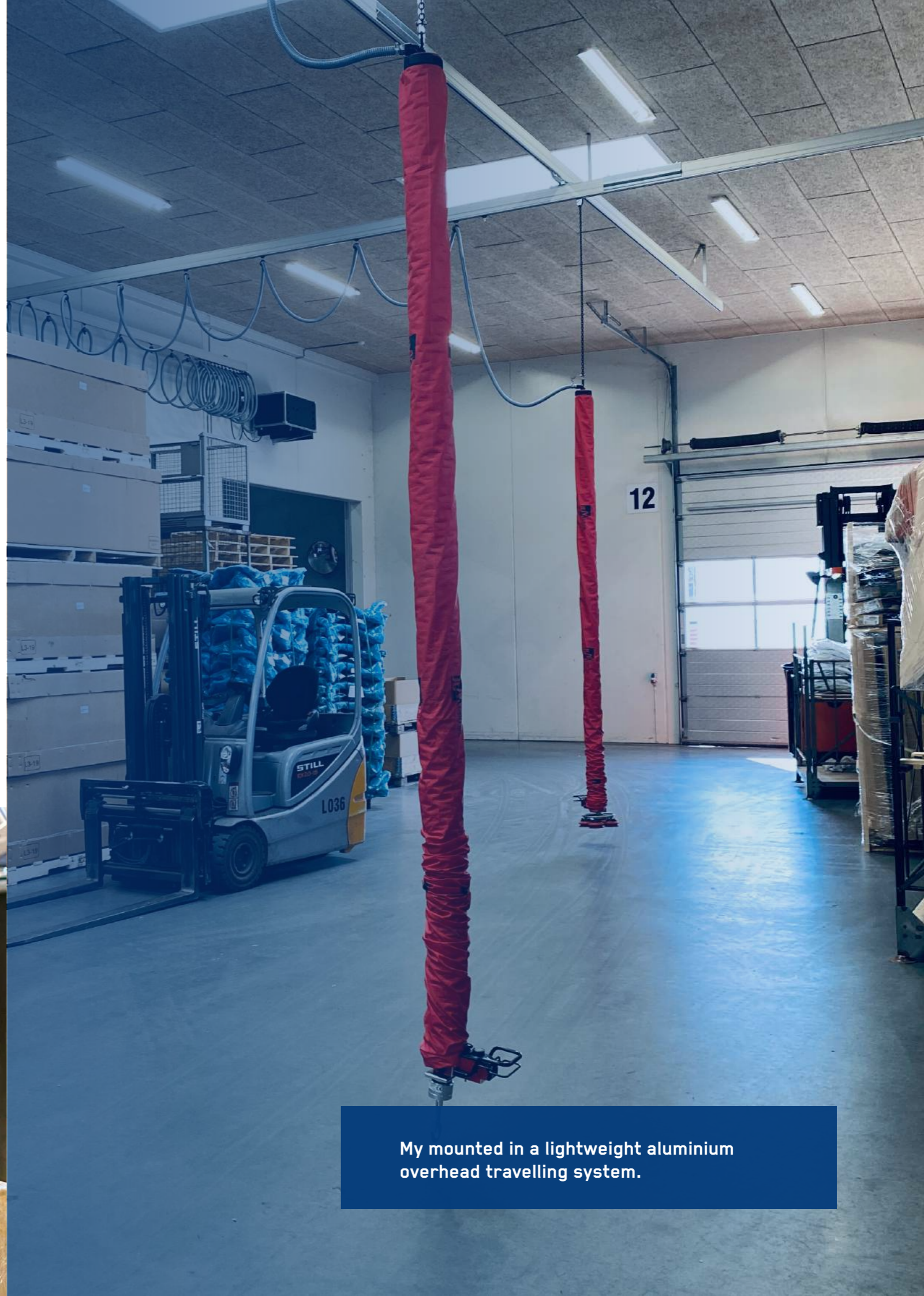
**Column bracket for shelf bracket
160x160**
Item no. 131502



**Column bracket for shelf bracket
200x200**
Item no. 131505



Suction foot fitted with a knife



My mounted in a lightweight aluminium overhead travelling system.

Portable vacuum crane

Danish-made, user-friendly mini crane with vacuum that can be used where flexibility in lifting is required. For example, sacks, wood, cardboard boxes, etc.

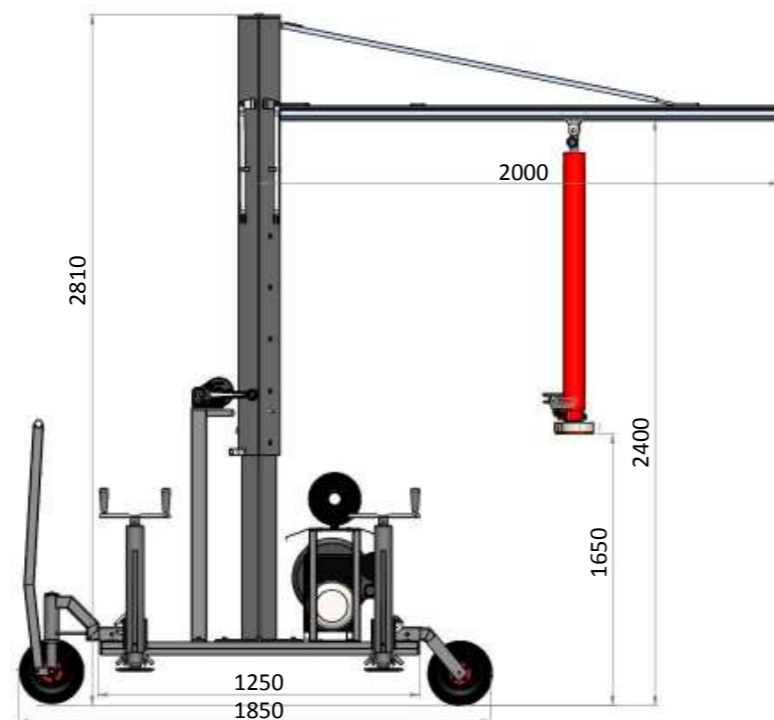
- Lifting capacity of up to 35 kg
- Comes with a red vacuum hose (Ø100) and My control handle
- Vacuum pump D25 3.0 kW 400 v 50 Hz
- Suction foot based on product handling
- Crane dimensions 800 (1035) mm x 1250 (1850) mm
- Total height max. 2800 mm
- Transport height min. 2010 mm
- Height under boom: min. 1650 mm, max. 2400 mm
- Lock on crane arm during transport
- Maximum lifting height: 1650 mm
- Raise/lower crane column with winch
- Column can be locked with pawl every 200 mm
- ON/OFF for vacuum pump is located under protective shield
- The vacuum pump must be connected with CE plug 400 v 50 Hz
- Includes 9 metres of power cable
- Fitted with drawbar and 4 wheels
- Support feet are adjustable and can be removed
- Dead weight of 650 kg
- CE-approved



Suction head



Support feet



'Empty' portable vacuum lifter

Danish-made quality crane for emptying containers and more

- Quick set-up
- Can be moved with a forklift or pallet lifter
- Adjustable feet
- Covers an area of Ø2400 mm from the column
- Available with suction heads for sacks, cardboard boxes, etc.
- Used, e.g. for emptying containers or similar tasks
- 360° free rotation
- Stepless, electric 700 mm telescopic function
- Lifting height up to 1600 mm
- Lifting capacity of up to 40 kg
- Dead weight of 600 kg
- Lock for swing arm
- Permanently installed vacuum pump with sound box
- Connects to mains voltage with CEE plug
- Switch for the pump on the side of the sound box
- Can be fitted with either Alpha, My or Tau suction head



Alpha suction head



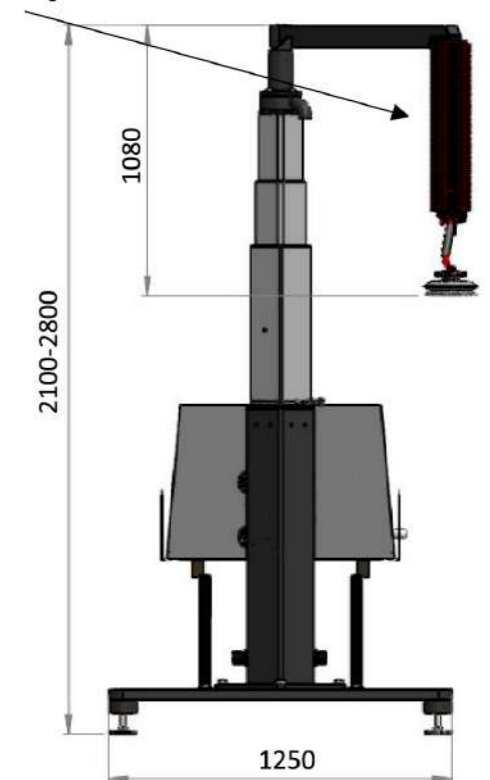
My suction head



Tau suction head



Vacuumed together



Made in Denmark 

All rights reserved for printing errors.



JLM teknik ApS, Erhvervsparken 2, DK-9500 Hobro • Tel. +45 9857 6060 • info@jlmteknik.dk • www.jlmteknik.dk